



Low Voltage Distribution System

YT-WM Series – Industrial Enclosures

Yatron **WM**



Catalogue



Powered by GE



COMPANY PROFILE

GLOBAL FOOTPRINT



GLOBAL

- **GLOBAL HQ:** London, UK
- **R&D CENTER:** Germany | Munich
- **MANUFACTURING CENTER**
 - Germany | Munich
 - Italy | Milano
- **EUROPE - BRANCH / REP. / EXP. CENTER**
 - UK | London
 - Germany | Berlin, Munich
 - France | Paris

ASIA

- **ASIA HQ:** Macau S.A.R
- **OPERATION CENTER**
 - China | Guangdong | Zhuhai
- **R&D CENTER:** Taiwan | New Taipei
- **TECH. CENTER:** China | Guangzhou
- **FINANCE CENTER:** Hong Kong S.A.R
- **PACIFIC RIM CENTER**
 - China | Hainan | Qiongzong
- **MANUFACTURING CENTER:**
 - China | Guangdong | Zhuhai, Jiangman
 - Taiwan | New Taipei city
- **ASIA - BRANCH / REP. / EXP. CENTER**
 - Hong Kong SAR, Macau SAR
 - Taiwan | Taipei, Kaohsiung, Taichung
 - China | Guangdong | Zhuhai, Guangzhou
 - China | Hainan | Haikou, Qiongzong
 - Singapore (HQ of ASEAN)
 - Malaysia | Kuala Lumpur
 - Thailand | Bangkok
 - Indonesia | Jakarta
 - Philippines | Manila
 - Vietnam | Ho Chin Minh

AFRICA

- **AFRICA - BRANCH / REP. / EXP. CENTER**
 - South Africa | Johannesburg
 - South Africa | Newcastle

INTRODUCTION

YATRON

YATRON was established in 2006, powered by General Electric - GE of the United States. It is a comprehensive holding group.

Its subsidiary **YATRON Smart City and Energy Group** is the world's leading Green and Smart City diversity organization. Its businesses include: Green and Smart City Solutions, Smart factories and Smart manufacturing, Smart energy management, Smart agriculture, Smart buildings, Smart healthcare, Smart transportation, Smart education, Smart sports, new semiconductor materials, etc. We are present in fields such as industrial manufacturing, energy, semiconductors, commerce, data centers, water treatment, transportation, sports facilities, medical systems, fishery and agriculture, education and culture, event planning and exhibitions, etc. YATRON utilizes its own core technologies and products and integrates various system resources.

We provide customers with comprehensive end products and service solutions to ensure the reliability and protection of production, power and energy infrastructure. And continue to implement Chinese and German TÜV SÜD ISO9001, ISO14001, ISO50001 and ERP systems.

Corporate social responsibility (CSR) and ESG are YATRON's long-term concepts for sustainable development.



■ Manufacturing and System Integration

- Smart Low-voltage switchgears and controlgear equipment
- Smart LV and MV Components
- Smart Energy Management System
- Smart Power Quality
- Cable and Wire
- Smart Lighting
- Custom made system, hardware and software

■ Solutions and Trade

- All Smart solutions

■ Investment and Management

- Mega Complex building and Infrastructure
 - Mega Shopping Mall
 - Resort, Hotel, Service apartment
 - Commercial building
 - High-end residential building
 - Industrial plant, Intelligence Warehouse
 - Power plant
 - Power substation and Water plant
 - Highway, Railway and Port
 - BOT, BT
- Renewable Energy | Wind and Solar Energy

■ Climate and Energy Consulting Service

■ Energy

- Energy Consulting Service
- Energy Consulting Service
- Energy Management System (EnMS)
- Renewable Energy
- Wind and Solar Energy System
- Electric Vehicle and Charger System
- Energy Storage System (ESS)
- Industrial and Building automation integration (BAS, SCADA, PLC)

■ Construction and MEP Engineering

- EPC
- Turn-key

INTRODUCTION

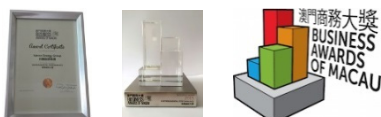
YATRON since 2006 year in the Industrial, Commercial and Residential market



AWARDS

- CSR (Corporate Social Responsibility) By MIRROR POST HK 27th March, 2015
- BUSINESS AWARDS OF MACAU Environmental Performance 26th November, 2015

鏡報《鏡報》月刊主辦 傑出企業社會責任獎



STANDARDS

Complies with	Certificates
ISO 9001 ISO 14000 ISO 18000 ISO 50001	TUV SUD (Germany)
IEC 62208	TUV SUD (Germany)
IEC 60439 IEC 61439	IECEE, KEMA, ASEFA, CEBEC, ASTA, TUV
GB 7251	CCC (China)
IEC 60331	TICW
BS 6387	TICW
UL94	SGS



PRODUCT INTRODUCTION

- **The YATRON-WM** Series Industrial Enclosures can be divided into two categories in terms of structure, one is **Plain doors** and the other one is **Glass door**. All of the products are bended with Cold Rolled Steel Sheet, while the surfaces are treated with epoxy resin electrostatic spraying in order to be attractive and durable.



- The enclosures of models IP55 and IP66 with waterproof bevel edges and rubber seals fitted by Robots around the door can effectively prevent any liquids (such as the oil, rainwater etc.) and dust from permeating into the enclosure.

- Its advantages are: attractive appearance design, reasonable frame, safe circuit layout, excellent performance, passed the salt mist and aging tests of BS/EN/IEC standards, long lasting etc. advantages.



- The external door with the unique 45° patent bevel enables liquids and dust to drop down easier rather than accumulate on the enclosure, so as to extend the service life.
- The cable entrance plates can be located on top or below the enclosures.

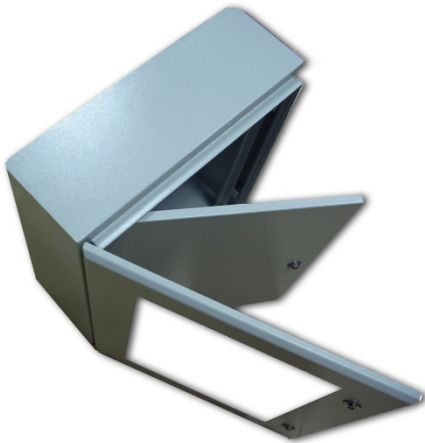


- The door opening degrees of the exterior door is more than 130 degrees, and it is easy to open and close the door.

- There are 42 kinds of size specifications provided for customers, or custom-made are also available.
- The standard color is light grey (RAL7035), custom-made colors or Stainless steel is also available.

PRODUCT INTRODUCTION

- It is high universality with variety of styles and it can be used not only in the general commercial and industrial power distributions and control, it also can be assembled for different electrical control systems such as the PLC Control Panel, AC Control Panel, Transmission Control Panel, Pump Control Panel etc.
- A lot of accessories in order to assemble several solutions. Besides, the components could be installed by Mounting plates or Supporting accessories according to the special requirements.



- Industrial Type
- Comply with BS EN / IEC / NEMA / GB (EU, UK, USA, China)
- Excellent performances

CERTIFICATIONS

- The **YATRON-WM** Series Industrial Enclosures has been issued certificates from TUV SUD Germany, following successful testing in according with BS EN / IEC 62208 standards.



APPLICATIONS

- The YATRON-WM is suitable to be used in residential, commercial and industrial (petroleum, mine , chemical industry, metallurgy, textile, rubber, equipment manufacturing etc.) power distribution systems.



SPECIFICATIONS

■ Features

- Delivered in kit form
 - Partition types: Form 1 / Form 2
 - Exterior door
 - Plain door / Glass door
- Interior door
 - Single
 - Modular
- Degrees of protection
 - IP41 / IP43 / IP55 / IP66
 - Protected against external mechanical impacts
 - Plain door: IK10
 - Glass door: IK08

■ Standards

- BS EN / IEC 62208 (EU, UK)
- NEMA 4, 12 and 13 (USA)
- GB/T20641 (China)

■ Certificates / Marking



■ Materials

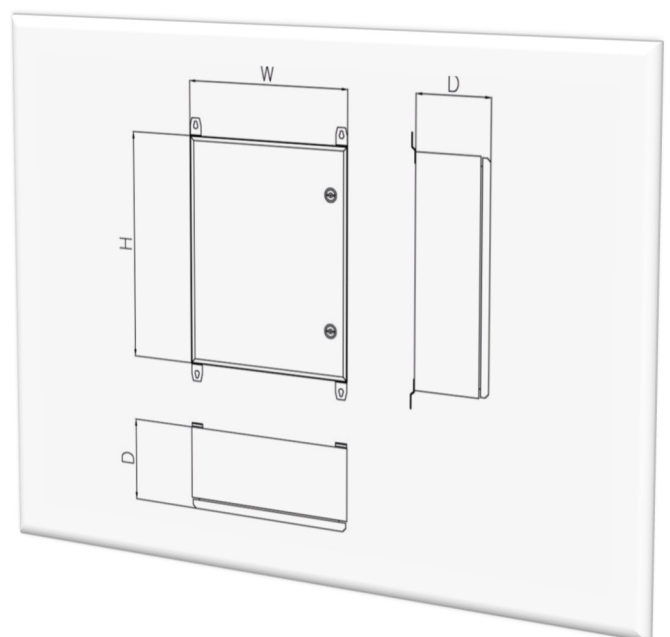
- Door, side panels and cover panel
 - Steel panel coated with epoxy resin or Stainless steel
- Adaptor
 - Zinc galvanized cold rolled steel sheet
- Colors
 - Light grey (RAL7035)
 - Other (cream, red, light yellowish grey, apple green, white or custom-made) or Stainless steel

■ Electrical Characteristics

- Rated voltage : 690AC - 50/60Hz
- Rated current : Max. 630A
- Rated short current I_{CW} : Max 30kA (1 sec.)
- Rated peak short circuit current I_{PK} : 60kA peak (1 sec.)

■ 幾何尺寸 Dimensions

- Height(H) : 300 ~ 1800 mm
- Width(W) : 300 ~ 1000 mm
- Depth(D) : 200 ~ 500 mm



ORDERING INFORMATION

Wall Mounted Metal Enclosures

Enclosure	H Height (mm)	W Width (mm)	D Depth (mm)	INT. Door	Supporting/ Mounting Plate	Wall Mounting Brackets
YT-WM-33200	300	300	200	YT-WM-ID-33	YT-WM-S/MP-33	YT-WM-MB-33
YT-WM-43200	400	300	200	YT-WM-ID-43	YT-WM-S/MP-43	YT-WM-MB-43
YT-WM-44200	400	400	200	YT-WM-ID-44	YT-WM-S/MP-44	YT-WM-MB-44
YT-WM-53200	500	300	200	YT-WM-ID-53	YT-WM-S/MP-53	YT-WM-MB-53
YT-WM-54200	500	400	200	YT-WM-ID-54	YT-WM-S/MP-54	YT-WM-MB-54
YT-WM-55200	500	500	200	YT-WM-ID-55	YT-WM-S/MP-55	YT-WM-MB-55
YT-WM-64200	600	400	200	YT-WM-ID-64	YT-WM-S/MP-64	YT-WM-MB-64
YT-WM-65200	600	500	200	YT-WM-ID-65	YT-WM-S/MP-65	YT-WM-MB-65
YT-WM-66200	600	600	200	YT-WM-ID-66	YT-WM-S/MP-66	YT-WM-MB-66
YT-WM-75200	700	500	200	YT-WM-ID-75	YT-WM-S/MP-75	YT-WM-MB-75
YT-WM-76200	700	600	200	YT-WM-ID-76	YT-WM-S/MP-76	YT-WM-MB-76
YT-WM-85200	800	500	200	YT-WM-ID-85	YT-WM-S/MP-85	YT-WM-MB-85
YT-WM-86200	800	600	200	YT-WM-ID-86	YT-WM-S/MP-86	YT-WM-MB-86
YT-WM-88200	800	800	200	YT-WM-ID-88	YT-WM-S/MP-88	YT-WM-MB-88
YT-WM-53250	500	300	250	YT-WM-ID-53	YT-WM-S/MP-53	YT-WM-MB-53
YT-WM-55250	500	500	250	YT-WM-ID-55	YT-WM-S/MP-55	YT-WM-MB-55
YT-WM-65250	600	500	250	YT-WM-ID-65	YT-WM-S/MP-65	YT-WM-MB-65
YT-WM-66250	600	600	250	YT-WM-ID-66	YT-WM-S/MP-66	YT-WM-MB-66
YT-WM-75250	700	500	250	YT-WM-ID-75	YT-WM-S/MP-75	YT-WM-MB-75
YT-WM-76250	700	600	250	YT-WM-ID-76	YT-WM-S/MP-76	YT-WM-MB-76
YT-WM-86250	800	600	250	YT-WM-ID-86	YT-WM-S/MP-86	YT-WM-MB-86
YT-WM-88250	800	800	250	YT-WM-ID-88	YT-WM-S/MP-88	YT-WM-MB-88
YT-WM-106250	1000	600	250	YT-WM-ID-106	YT-WM-S/MP-106	YT-WM-MB-106
YT-WM-108250	1000	800	250	YT-WM-ID-108	YT-WM-S/MP-108	YT-WM-MB-108
YT-WM-1010250	1000	1000	250	YT-WM-ID-101	YT-WM-S/MP-101	YT-WM-MB-101
YT-WM-126250	1200	600	250	YT-WM-ID-126	YT-WM-S/MP-126	YT-WM-MB-126
YT-WM-128250	1200	800	250	YT-WM-ID-128	YT-WM-S/MP-128	YT-WM-MB-128
YT-WM-1210250	1200	1000	250	YT-WM-ID-121	YT-WM-S/MP-121	YT-WM-MB-121
YT-WM-53300	500	300	300	YT-WM-ID-53	YT-WM-S/MP-53	YT-WM-MB-53
YT-WM-55300	500	500	300	YT-WM-ID-55	YT-WM-S/MP-55	YT-WM-MB-55
YT-WM-66300	600	600	300	YT-WM-ID-66	YT-WM-S/MP-66	YT-WM-MB-66
YT-WM-65300	600	500	300	YT-WM-ID-65	YT-WM-S/MP-65	YT-WM-MB-65

ORDERING INFORMATION

Wall Mounted Metal Enclosures

Enclosure	H Height (mm)	W Width (mm)	D Depth (mm)	INT. Door	Supporting/ Mounting Plate	Wall Mounting Brackets
YT-WM-75300	700	500	300	YT-WM-ID-75	YT-WM-S/MP-75	YT-WM-MB-75
YT-WM-76300	700	600	300	YT-WM-ID-76	YT-WM-S/MP-76	YT-WM-MB-76
YT-WM-86300	800	600	300	YT-WM-ID-86	YT-WM-S/MP-86	YT-WM-MB-86
YT-WM-88300	800	800	300	YT-WM-ID-88	YT-WM-S/MP-88	YT-WM-MB-88
YT-WM-106300	1000	600	300	YT-WM-ID-106	YT-WM-S/MP-106	YT-WM-MB-106
YT-WM-108300	1000	800	300	YT-WM-ID-108	YT-WM-S/MP-108	YT-WM-MB-108
YT-WM-1010300	1000	1000	300	YT-WM-ID-101	YT-WM-S/MP-101	YT-WM-MB-101
YT-WM-126300	1200	600	300	YT-WM-ID-126	YT-WM-S/MP-126	YT-WM-MB-126
YT-WM-128300	1200	800	300	YT-WM-ID-128	YT-WM-S/MP-128	YT-WM-MB-128
YT-WM-1210300	1200	1000	300	YT-WM-ID-1210	YT-WM-S/MP-1210	YT-WM-MB-1210

* Customer made is available, please contact our sales representative.

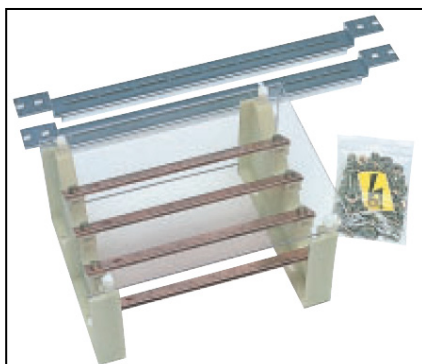
ACCESSORIES



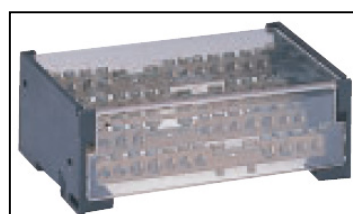
IP66 High quality Door Lock



Terminals



4 Poles terminals (63A, 125A, 160A, 400A, 630A)



ORDERING INFORMATION

YT – WM – 86200 - P(G) - 41(43 / 55 / 66)

IP (Degrees of protection)	: IP41 / 43 / 55 / 66
Ext. door types	: Plain / Glass / SSP / SSG
Size	: 800(H) x 600(W) x 200(D)
Mounting type	: Wall mounting
Brand	: YATRON

Intelligence Makes the Dream Come True

www.yatrongroup.com/smartcityenergy

sales@yatrongroup.com

Whatsapp : +86 18926925433 | Wechat : yatrongroupcs

Facebook : yatrongroup | LinkedIn : yatrongroup